

The Brief Introduction:

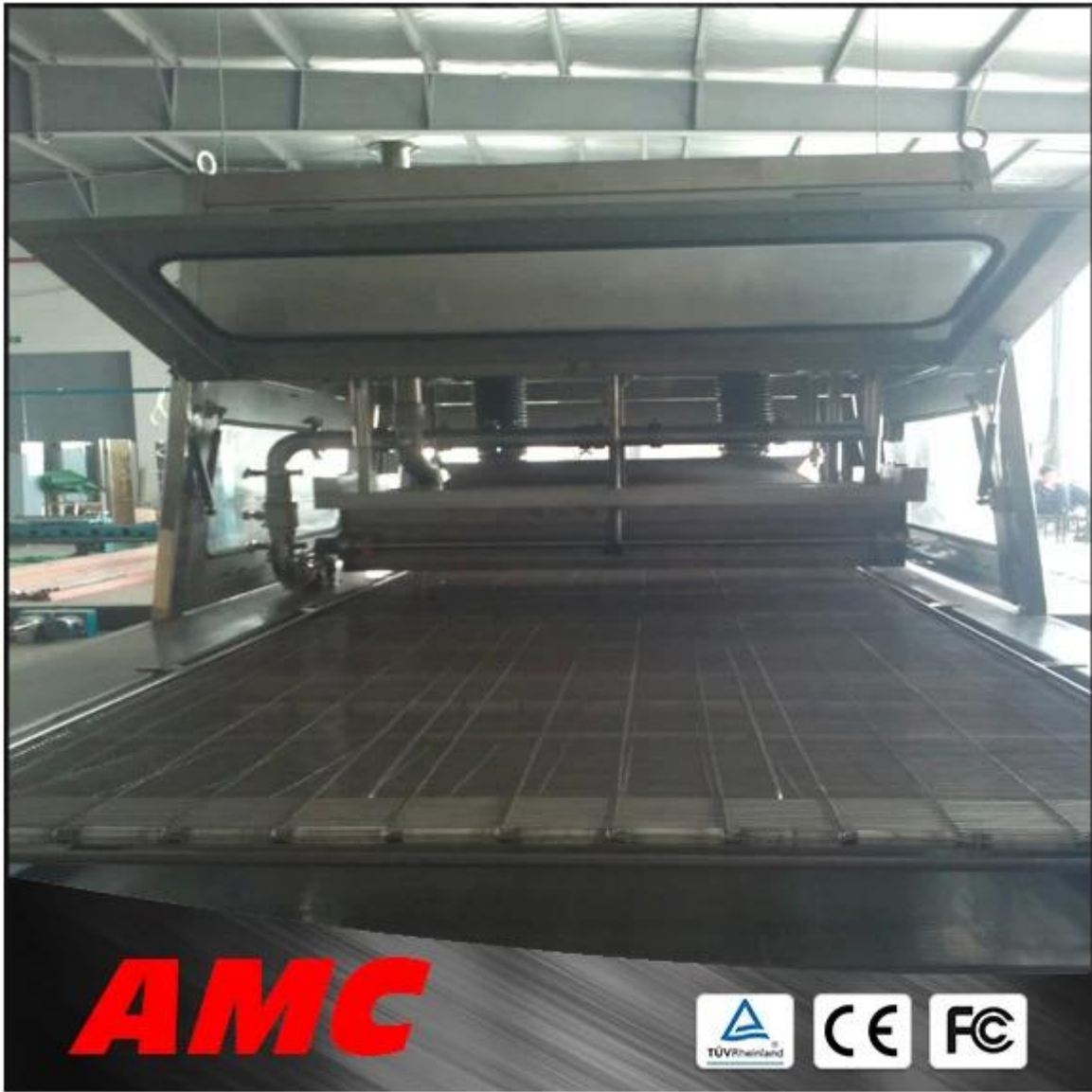
[enrober chocolate machine](#) is for a special purpose of producing assorted chocolates.

It can coat thick chocolate syrup on many kinds of food, such as candy, pastry, biscuit etc. to form chocolates with various unique flavors.

Technical parameter:

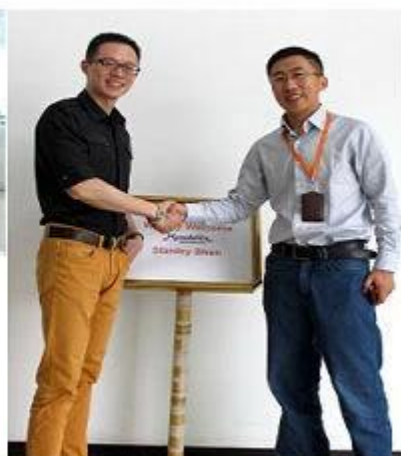
Model	AMC-SSEM400	AMC-SSEM600	AMC-SSEM800	AMC-SSEM1000	AMC-SSEM1200
Total power(kw)	7.5	9.17	9.17	12	12.5
Dimension	12000*850*1800	12000*940*1800	12000*1400*1800	12000*1650*1800	12000*1850*1800
Net Weight(g)	1800	2300	2800	3600	4000
Width of conveyor belt(mm)	400	600	800	1000	1200
Speed of conveyor belt(m/min)	1-3	1-3	1-3	1-3	1-3
Width of mesh belt(mm)	350	550	750	950	1150
Temperature of cooling tunnel(°C)	0-10	0-10	0-10	0-10	0-10
Cooling tunnel length(m)	10	10	10	10	10

Detailed picture:



**AMC**





# AMC

AMC SYSTEM TECHNOLOGY (SUZHOU) CO., LTD.



AMC was established in 2004, which is a high tech enterprise with a number of patented inventions as well as professional R&D and sales team.

## Our Partners



Our partners around the world

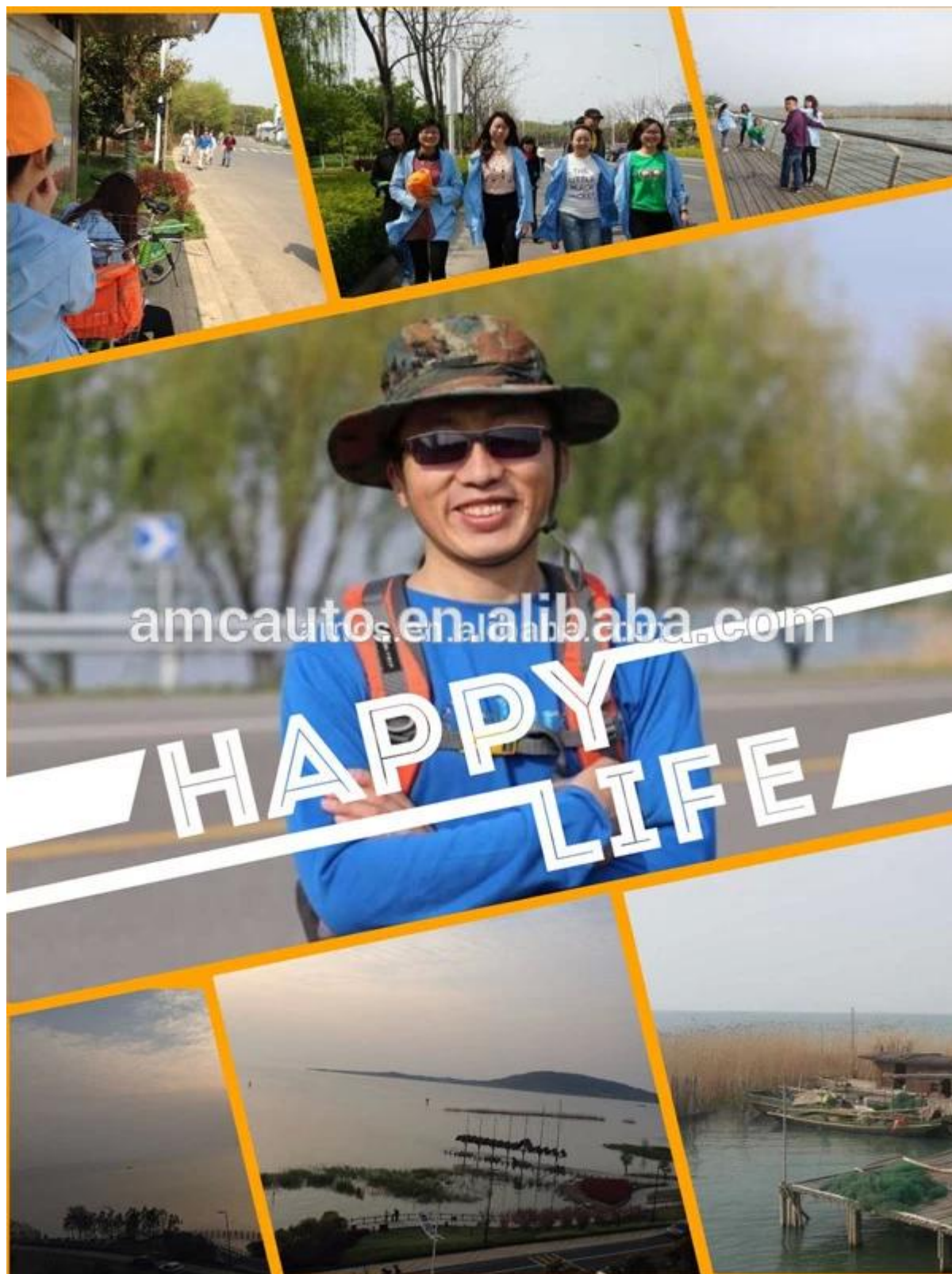




## Our Cetification



Our outdoor activities:





Head Office : 3-1218 SEG Plaza, No.588 Binhe Road,  
SND, Jiangsu Province, China

Suzhou Plant: 3# Tianling Industry Park, No.218 South  
Jinfeng Road,Mudu Suzhou.

Nantong Factory: No.28 Xiyuan Road,Hai'an, Jiangsu  
Province

**Welcome to inquire!**

Tel: 0086 +15806201683    Email: [joice@amcauto.cn](mailto:joice@amcauto.cn)

Skype:live:1315274089    Tel:86-512-68096358

**Contact Us**